

062768 -01

ORNL/RASA-88/47

M-050



**OAK RIDGE
NATIONAL
LABORATORY**

MARTIN MARIETTA

**RESULTS OF THE
RADIOLOGICAL SURVEY
AT
6 BRANCA COURT, LODI,
NEW JERSEY (LJ041)**

**R. D. Foley
L. M. Floyd
R. F. Carrier
J. W. Crutcher**

**PERFORMED BY
MARTIN MARIETTA ENERGY SYSTEMS, INC.
FOR THE UNITED STATES
DEPARTMENT OF ENERGY**

062768

This report has been reproduced directly from the best available copy.

Available to DOE and DOE contractors from the Office of Scientific and Technical Information, P.O. Box 62, Oak Ridge, TN 37831; prices available from (615) 576-8401, FTS 626-8401.

Available to the public from the National Technical Information Service, U.S. Department of Commerce, 5285 Port Royal Rd., Springfield, VA 22161.

NTIS price codes—Printed Copy: A03 Microfiche A01

This report was prepared as an account of work sponsored by an agency of the United States Government. Neither the United States Government nor any agency thereof, nor any of their employees, makes any warranty, express or implied, or assumes any legal liability or responsibility for the accuracy, completeness, or usefulness of any information, apparatus, product, or process disclosed, or represents that its use would not infringe privately owned rights. Reference herein to any specific commercial product, process, or service by trade name, trademark, manufacturer, or otherwise, does not necessarily constitute or imply its endorsement, recommendation, or favoring by the United States Government or any agency thereof. The views and opinions of authors expressed herein do not necessarily state or reflect those of the United States Government or any agency thereof.

HEALTH AND SAFETY RESEARCH DIVISION

Nuclear and Chemical Waste Programs
(Activity No. AH 10 05 00 0; ONLWCO1)

**RESULTS OF THE RADIOLOGICAL
SURVEY AT 6 BRANCA COURT,
LODI, NEW JERSEY (LJ041)**

R. D. Foley, L. M. Floyd, R. F. Carrier, and J. W. Crutcher

Date Published - June 1989

Investigation Team

R. E. Swaja - Measurement Applications and Development Manager
W. D. Cottrell - FUSRAP Project Director
R. W. Doane* - Field Survey Supervisor

*Former Employee of Martin Marietta Energy Systems, Inc.

Survey Team Members

A. C. Butler	C. A. Johnson
K. S. Dickerson	C. A. Muhr
B. S. Ellis	E. M. Pilz
D. S. Foster	W. H. Shinpaugh**
D. W. Greene	W. Winton

**Stone Associates

Work performed by the
MEASUREMENT APPLICATIONS AND DEVELOPMENT GROUP

Prepared by the
OAK RIDGE NATIONAL LABORATORY
Oak Ridge, Tennessee 37831-6285
operated by
MARTIN MARIETTA ENERGY SYSTEMS, INC.
for the
U. S. DEPARTMENT OF ENERGY
under Contract No. DE-AC05-84OR21400

CONTENTS

LIST OF FIGURES	v
LIST OF TABLES	vii
ACKNOWLEDGMENTS	ix
ABSTRACT	xi
INTRODUCTION	1
SURVEY METHODS	2
SURVEY RESULTS	2
Surface Gamma Radiation Levels	3
Systematic and Biased Soil Samples	3
Auger Hole Soil Samples and Gamma Logging	3
SIGNIFICANCE OF FINDINGS	3
REFERENCES	4

LIST OF TABLES

1	Applicable guidelines for protection against radiation	11
2	Background radiation levels for the northern New Jersey area	11
3	Concentrations of radionuclides in soil at 6 Branca Court, Lodi, New Jersey (LJ041)	12

ACKNOWLEDGMENTS

Research for this project was sponsored by the Division of Facility and Site Decommissioning Projects, U.S. Department of Energy, under Contract No. DE-AC05-84OR21400 with Martin Marietta Energy Systems, Inc. The authors wish to acknowledge the support of J. E. Baublitz, Acting Director, Office of Remedial Action and Waste Technology; J. J. Fiore, Director, Division of Facility and Site Decommissioning Projects; and members of their staffs. The authors also appreciate the contributions of J. L. Rich, S. W. Hawthorne, B. C. Littleton, and L. J. Jeffers of the Publications Division; M. S. Uziel of the Environmental Information Systems Group; B. S. Ellis, D. A. Roberts, and T. R. Stewart of the Measurement Applications and Development Group; and W. H. Shinpaugh of Don Stone Associates for participation in the collection, analyses, editing, and reporting of data for this survey.

ABSTRACT

Maywood Chemical Works (MCW) of Maywood, New Jersey, generated process wastes and residues associated with the production and refining of thorium and thorium compounds from monazite ores from 1916 to 1956. MCW supplied rare earth metals and thorium compounds to the Atomic Energy Commission and various other government agencies from the late 1940s to the mid-1950s. Area residents used the sandlike waste from this thorium extraction process mixed with tea and cocoa leaves as mulch in their yards. Some of these contaminated wastes were also eroded from the site into Lodi Brook. At the request of the U.S. Department of Energy (DOE), a group from Oak Ridge National Laboratory conducts investigative radiological surveys of properties in the vicinity of MCW to determine whether a property is contaminated with radioactive residues, principally ^{232}Th , derived from the MCW site. The survey typically includes direct measurement of gamma radiation levels and soil sampling for radionuclide analyses. The survey of this site, 6 Branca Court, Lodi, New Jersey (LJ041), was conducted during 1985 and 1986.

Results of the survey demonstrated radionuclide concentrations in excess of the DOE Formerly Utilized Sites Remedial Action Program criteria. The radionuclide distributions are typical of the type of material originating from the MCW site.

**RESULTS OF THE RADIOLOGICAL
SURVEY AT 6 BRANCA COURT,
LODI, NEW JERSEY (LJ041)***

INTRODUCTION

From 1916 to 1956, process wastes and residues associated with the production and refining of thorium and thorium compounds from monazite ores were generated by the Maywood Chemical Works (MCW), Maywood, New Jersey. During the latter part of this period, MCW supplied rare earth metals and thorium compounds to various government agencies. In the 1940s and 1950s, MCW produced thorium and lithium, under contract, for the Atomic Energy Commission (AEC). These activities ceased in 1956, and, approximately three years later, the 30-acre real estate was purchased by the Stepan Company. The property is located at 100 Hunter Avenue in a highly developed area in Maywood and Rochelle Park, Bergen County, New Jersey.

During the early years of operation, MCW stored wastes and residues in low-lying areas west of the processing facilities. In the early 1930s, these areas were separated from the rest of the property by the construction of New Jersey State Highway 17. The Stepan property, the interim storage facility, and several vicinity properties have been designated for remedial action by the U.S. Department of Energy (DOE).

The waste produced by the thorium extraction process was a sandlike material containing residual amounts of thorium and its decay products, with smaller quantities of uranium and its decay products. During the years 1928 and 1944 to 1946, area residents used these process wastes mixed with tea and cocoa leaves as mulch in their lawns and gardens. In addition, some of the contaminated wastes were apparently eroded from the site into Lodi Brook and carried downstream.

Lodi Brook is a small stream flowing south from Maywood with its headwaters near the Stepan waste storage site. Approximately 150 ft after passing under State Route 17, the stream has been diverted underground through concrete or steel culverts until it merges with the Saddle River in Lodi, New Jersey. Only a small section near Interstate 80 remains uncovered. From the 1940s to the 1970s when the stream was being diverted underground, its course was altered several times. Some of these changes resulted in the movement of contaminated soil to the surface of a few properties, where it is still in evidence. In other instances, the contaminated soil was covered over or mixed with clean fill, leaving no immediate evidence on the surface. Therefore, properties in question may be drilled in search of former stream bed material, even in the absence of surface contamination.

As a result of the Energy and Water Appropriations Act of Fiscal Year 1984, the property discussed in this report and properties in its vicinity contaminated with residues from the former MCW were included as a decontamination research

*The survey was performed by members of the Measurement Applications and Development Group of the Health and Safety Research Division at Oak Ridge National Laboratory under DOE contract DE-AC05-84OR21400.

and development project under the DOE Formerly Utilized Sites Remedial Action Program. As part of this project, DOE is conducting radiological surveys in the vicinity of the site to identify properties contaminated with residues derived from the MCW. The principal radionuclide of concern is thorium-232. The radiological surveys discussed in this report are part of that effort and were conducted, at the request of DOE, by members of the Measurement Applications and Development Group of the Oak Ridge National Laboratory.

A radiological survey of the private, residential property at 6 Branca Court, Lodi, New Jersey, was conducted during 1985 and 1986. The survey and sampling of the ground surface were carried out on October 22, 1985, and the follow-up subsurface investigation was performed on September 10, 1986.

SURVEY METHODS

The radiological survey of the property included: (1) a gamma scan of the entire property outdoors, (2) collection of surface and subsurface soil samples, and (3) gamma profiles of auger holes. No indoor survey measurements were performed.

Using a portable gamma scintillation meter, ranges of measurements were recorded for areas of the property surface. If the gamma readings were elevated, a biased soil sample was taken at the point showing the highest gamma radiation level. Systematic soil samples were taken at various locations on the property, irrespective of gamma radiation levels.

To define the extent of possible subsurface soil contamination, auger holes were drilled to depths of approximately 2.1 m. A plastic pipe was placed in each hole, and a NaI scintillation probe was lowered inside the pipe. The probe was encased in a lead shield with a horizontal row of collimating slits on the side. This collimation allows measurement of gamma radiation intensities resulting from contamination within small fractions of the hole depth. Measurements were usually made at 15- or 30-cm intervals. If the gamma readings in the hole were elevated, a soil sample was scraped from the wall of the auger hole at the point showing the highest gamma radiation level. The auger hole loggings were used to select locations where further soil sampling would be useful. A split-spoon sampler was used to collect subsurface samples at known depths. In some auger holes, a combination of split-spoon sampling and side-wall scraping was used to collect samples. These survey methods followed the plan outlined in Reference 1. A comprehensive description of the survey methods and instrumentation has been presented in another report.²

SURVEY RESULTS

Applicable federal guidelines are summarized in Table 1.³ The normal background radiation levels for the northern New Jersey area are presented in Table 2. These data are provided for comparison with survey results presented in this section. All direct measurement results presented in this report are gross readings; background radiation levels have not been subtracted. Similarly, background concentrations have not been subtracted from radionuclide concentrations measured in environmental samples.

Surface Gamma Radiation Levels

Gamma radiation levels measured during a gamma scan of the surface of the property are given in Fig. 1. Gamma exposure rates over the major portion of the property ranged from 6 to 9 $\mu\text{R}/\text{h}$. The highest gamma level was in the front yard, reading 12 $\mu\text{R}/\text{h}$.

Systematic and Biased Soil Samples

Systematic and biased soil samples were taken from various locations on the property for radionuclide analyses. Locations of the systematic (S) and biased (B) samples are shown in Fig. 2, with results of laboratory analyses provided in Table 3. Concentrations of radium, thorium, and uranium in these samples ranged from 0.64 to 4.3 pCi/g, 0.68 to 35 pCi/g, and 0.58 to 6.1 pCi/g, respectively. Biased samples for thorium were above DOE guidelines (Table 1), ranging from 9.9 to 35 pCi/g.

Auger Hole Soil Samples and Gamma Logging

Varying thicknesses of subsurface soil were sampled from depths of 0 to 245 cm in auger holes (A) drilled at four separate locations indicated in Fig. 2. Auger hole A1 and biased sample B1 were taken from the same location. The results of analyses of these samples are given in Table 3 (A). Concentrations of ^{226}Ra and ^{232}Th in soil samples ranged from 0.56 to 2.9 and 0.70 to 18 pCi/g, respectively. Radionuclide concentrations in samples A1A and A1B were above DOE criteria (Table 1) for thorium, with values of 11 and 18 pCi/g between 30 and 150 cm.

Gamma logging was performed in each of the four auger holes to characterize and further define the extent of possible contamination. The logging technique used here is not radionuclide specific. However, logging data, in conjunction with soil analyses data, may be used to estimate regions of elevated radionuclide concentrations in auger holes when compared with background levels for the area. Following a comparison of these data, it appears that any shielded scintillator readings of 1000 counts per minute (cpm) or greater generally indicate the presence of elevated concentrations of ^{226}Ra and/or ^{232}Th . Data from the gamma profiles of the logged auger holes are graphically represented in Figs. 3 through 6. All readings in hole 1 were greater than 1000 cpm, with a maximum reading of 6272 cpm at 1.5 m. Readings in auger hole 2 were elevated between 1.4 and 1.5 m, with a maximum of 1283 cpm at 1.4 m. In hole 3, elevated readings were between 0.9 and 1.5 m, with a maximum of 2839 cpm at 1.2 m. All readings in hole 4 were below 1000 cpm. The areas of highest gamma readings correspond to the greatest concentrations of radionuclides shown in Table 3.

SIGNIFICANCE OF FINDINGS

Measurements taken at 6 Branca Court indicate that the property contained radioactive contamination primarily from the ^{232}Th decay chain, with slight contamination from ^{226}Ra . These radionuclide distributions are typical of the type of

material originating from the processing operations at the MCW site. The concentration and extent of ^{232}Th on this property were in excess of the applicable DOE criteria (Table 1). As shown in Fig. 2, this material was found at sample location

1. Based on the results of this radiological assessment, it is recommended that this site be considered for inclusion in the DOE remedial action program.

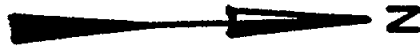
REFERENCES

1. W. D. Cottrell, ORNL, to A. J. Whitman, DOE/HQ, correspondence, "Radiological Survey of Private Properties in Lodi, New Jersey" (August 15, 1984).
2. T. E. Myrick, B. A. Berven, W. D. Cottrell, W. A. Goldsmith, and F. F. Haywood, *Procedures Manual for the ORNL Radiological Survey Activities (RASA) Program* Oak Ridge National Laboratory, ORNL/TM-8600 (April 1987).
3. U.S. Department of Energy, *Guidelines for Residual Radioactivity at Formerly Utilized Sites, Remedial Action Program and Remote Surplus Facilities Management Program Sites* (Rev. 2, March 1987).
4. T. E. Myrick and B. A. Berven, *State Background Radiation Levels: Results of Measurements Taken During 1975-1979*, Oak Ridge National Laboratory, ORNL/TM-7343 (November 1981).

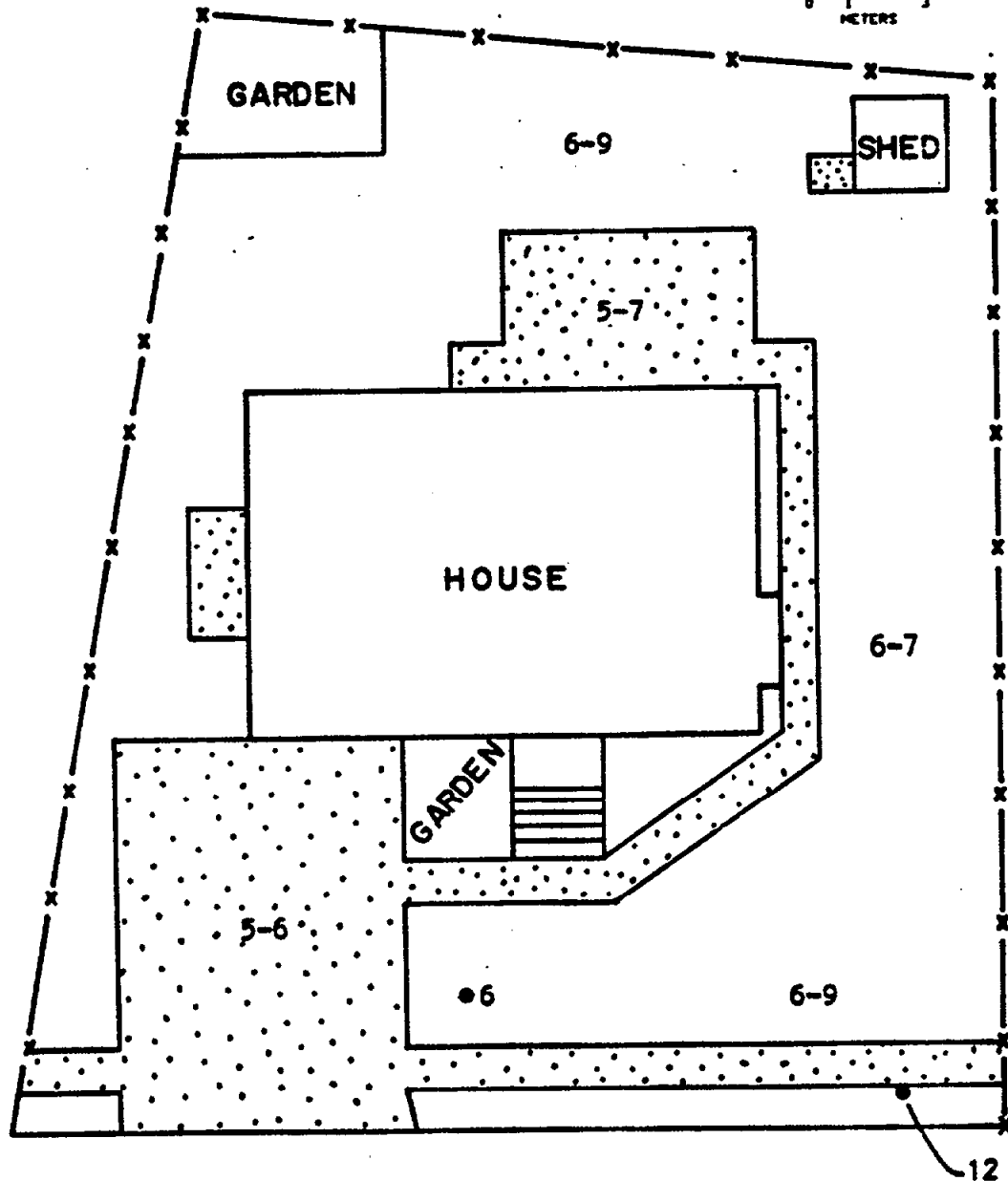
062768

5

ORNL-DWG 89-10608



 CONCRETE



6 BRANCA COURT

Fig. 1. Gamma radiation levels ($\mu\text{R}/\text{h}$) measured on the surface at 6 Branca Court, Lodi, New Jersey (LJ041).

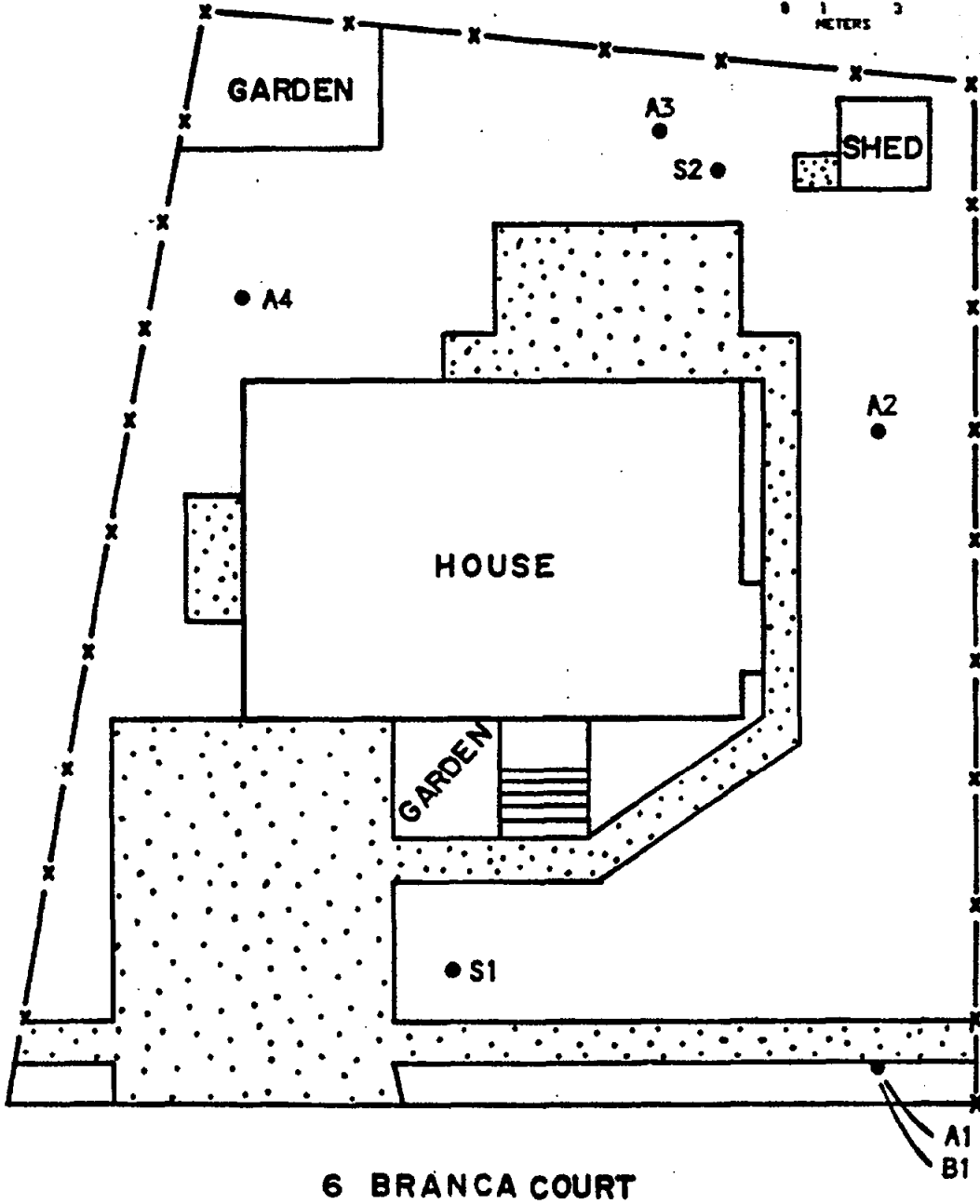
062768

6

ORNL-DWG 89-10809



 CONCRETE



6 BRANCA COURT

Fig. 2. Diagram showing locations of soil samples taken at 6 Branca Court, Lodi, New Jersey (LJ041).

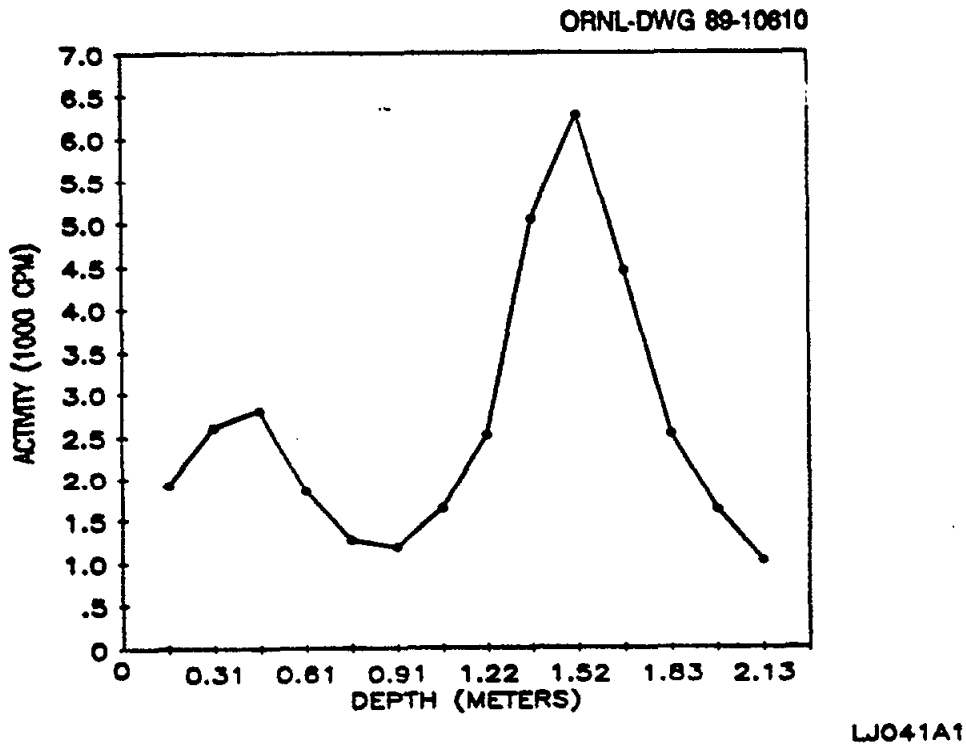
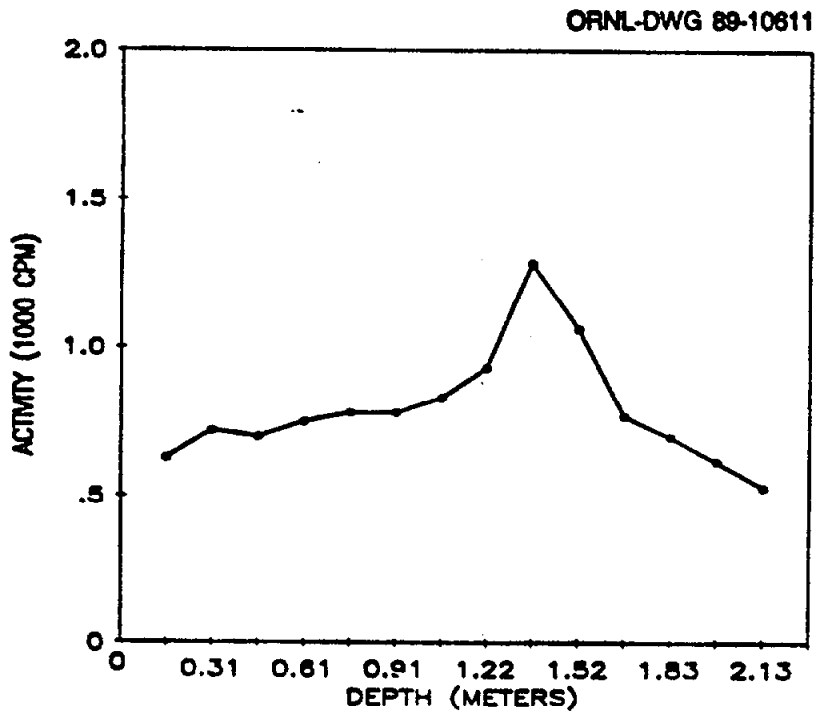


Fig. 3. Gamma profile for auger hole 1 (LJ041A1) at 6 Branca Court, Lodi, New Jersey.



LJ041A2

Fig. 4. Gamma profile for auger hole 2 (LJ041A2) at 6 Branca Court, Lodi, New Jersey.

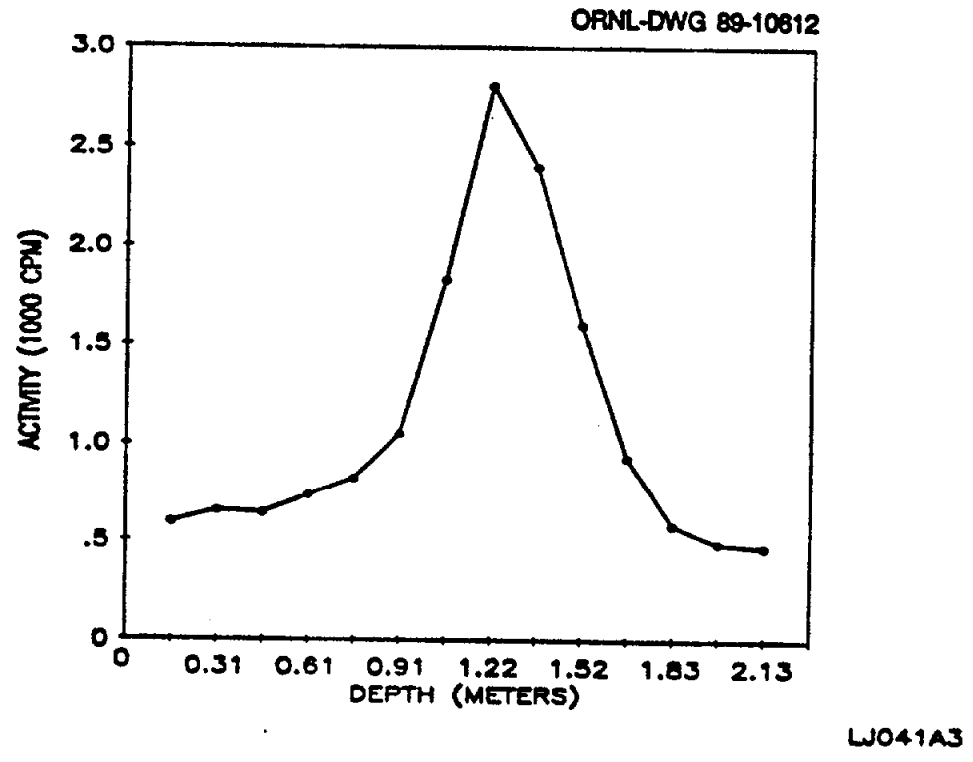
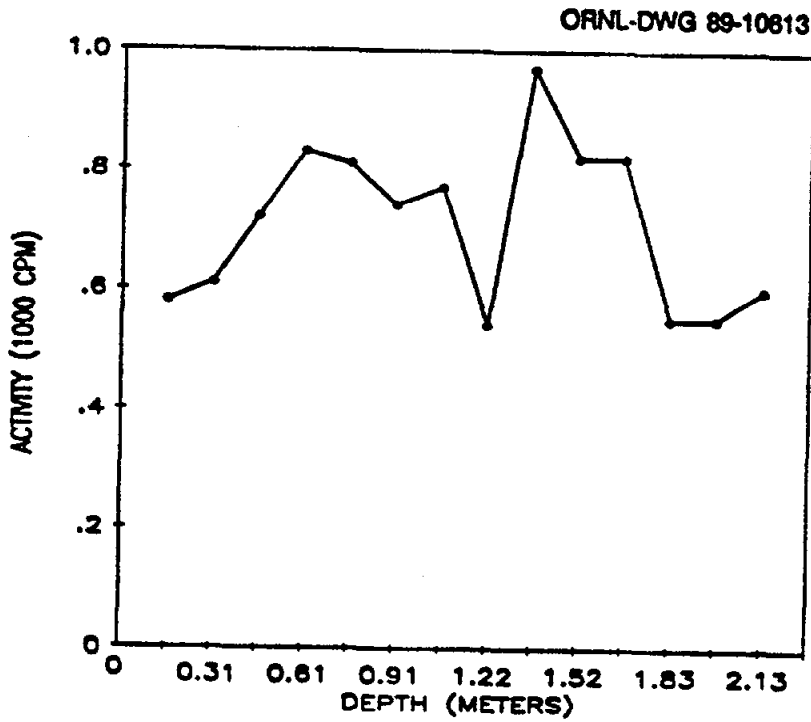


Fig. 5. Gamma profile for auger hole 3 (LJ041A3) at 6 Branca Court, Lodi, New Jersey.



LJ041A4

Fig. 6. Gamma profile for auger hole 4 (LJ041A4) at 6 Branca Court, Lodi, New Jersey.

Table 1. Applicable guidelines for protection against radiation^a

Mode of exposure	Exposure conditions	Guideline value
Radionuclide concentrations in soil	Maximum permissible concentration of the following radionuclides in soil above background levels averaged over 100 m ² area ²³² Th ²³⁰ Th ²²⁸ Ra ²²⁶ Ra	5 pCi/g averaged over the first 15 cm of soil below the surface; 15 pCi/g when averaged over 15-cm thick soil layers more than 15 cm below the surface

^aReference 3.**Table 2. Background radiation levels for the northern New Jersey area**

Type of radiation measurement or sample	Radiation level or radionuclide concentration
Concentration of radionuclides in soil (pCi/g)	
²³² Th	0.9 ^a
²³⁸ U	0.9 ^a
²²⁶ Ra	0.9 ^a

^aReference 4.

Table 3. Concentrations of radionuclides in soil at
6 Branca Court, Lodi, New Jersey (LJ041)

Sample ^a	Depth (cm)	Radionuclide concentration (pCi/g)		
		²²⁶ Ra ^b	²³² Th ^b	²³⁸ U ^c
<i>Systematic samples^d</i>				
S1	0-15	0.71±0.1	0.74±0.6	1.4
S2	0-15	0.64±0.1	0.68±0.4	0.70
<i>Biased samples^e</i>				
B1A	30-45	0.97±0.1	3.5 ±0.6	0.58
B1B	45-60	4.3 ±0.6	35 ±3	5.3
B1C	30-45	4.3 ±0.2	35 ±4	6.1
B1D	45-60	2.1 ±0.1	9.9 ±0.6	2.9
<i>Auger samples^f</i>				
A1A	30-45	2.1 ±0.1	11 ±0.6	g
A1B	120-150	2.9 ±0.1	18 ±1	g
A2A	30-60	0.81±0.04	1.2 ±0.08	g
A2B	120-150	0.87±0.06	1.5 ±0.08	g
A3A	0-30	0.59±0.03	0.70±0.2	g
A3B	30-60	0.56±0.1	0.72±0.06	g
A3C	60-90	0.71±0.03	1.6 ±0.1	g
A3D	90-120	1.0 ±0.08	3.4 ±0.1	g
A3E	120-150	1.7 ±0.1	3.5 ±0.1	g
A3F	150-185	0.82±0.04	0.89±0.1	g
A3G	185-215	0.59±0.1	0.98±0.2	g
A3H	215-245	0.92±0.2	1.4 ±0.09	g
A4A	30-60	0.96±0.1	1.1 ±0.07	g
A4B	60-90	0.83±0.1	1.0 ±0.08	g
A4C	90-120	1.1 ±0.2	1.4 ±0.3	g
A4D	120-150	2.1 ±0.1	2.7 ±0.08	g
A4E	150-165	1.5 ±0.1	1.1 ±0.1	g

^aLocations of soil samples are shown on Fig. 2.

^bIndicated counting error is at the 95% confidence level ($\pm 2\sigma$).

^cTotal analytical error of measurement results is less than $\pm 5\%$ (95% confidence level).

^dSystematic samples are taken at locations irrespective of gamma exposure rates.

^eBiased samples are taken from areas shown to have elevated gamma exposure rates.

^fAuger samples are taken from holes drilled to further define the depth and extent of radioactive material. Holes are drilled where the surface may or may not be contaminated.

^gAuger samples were not analyzed for ²³⁸U.

INTERNAL DISTRIBUTION

- | | |
|-------------------|------------------------------|
| 1. B. A. Berven | 13. P. Y. Lu |
| 2. R. F. Carrier | 14. P. T. Owen |
| 3. W. D. Cottrell | 15-17. R. E. Swaja |
| 4. A. G. Croff | 18. J. K. Williams |
| 5. J. W. Crutcher | 19. Central Research Library |
| 6. L. M. Floyd | 20. IR&A Publications Office |
| 7-11. R. D. Foley | 21. Laboratory Records - RC |
| 12. S. V. Kaye | 22. Y-12 Technical Library |

EXTERNAL DISTRIBUTION

23. J. D. Berger, Oak Ridge Associated Universities, P.O. Box 117, Oak Ridge, TN 37831
24. R. W. Doane, Eberline, Inc., 800 Oak Ridge Turnpike, P.O. Box 350, Oak Ridge, Tn 37831
25. J. J. Fiore, U.S. Department of Energy, 19901 Germantown Road, Germantown, MD 20874
- 26-28. G. K. Hovey, Bechtel National, Inc., 800 Oak Ridge Turnpike, P.O. Box 350, Oak Ridge, TN 37831
29. L. R. Levis, Roy F. Weston, Inc., 20030 Century Blvd., Germantown, MD 20874
30. G. P. Turi, U.S. Department of Energy, 19901 Germantown Road, Germantown, MD 20874
31. J. W. Wagoner, U.S. Department of Energy, 19901 Germantown Road, Germantown, MD 20874
- 32-34. Andrew Wallo III, U.S. Department of Energy, 19901 Germantown Road, Germantown, MD 20874
35. Office of Assistant Manager, Energy Research and Development, Oak Ridge Operations Office, P.O. Box 2001, Oak Ridge, TN 37831-8600
- 36-37. Office of Scientific and Technical Information, DOE, P.O. Box 62, Oak Ridge, TN 37831