

146578  
M-604

---

Formerly Utilized Sites Remedial Action Program (FUSRAP)

---

# ADMINISTRATIVE RECORD

for Maywood, New Jersey

---



U.S. Department of Energy



## Department of Energy

Oak Ridge Operations Office  
P.O. Box 2001  
Oak Ridge, Tennessee 37831— 8723

September 26, 1996

Ms. Angela Carpenter  
U.S. Environmental Protection Agency  
Region II  
290 Broadway, 18th Floor  
New York, New York 10007-1866

Dear Ms. Carpenter:

### **MAYWOOD SITE - NPL SITE DELETION PACKAGE FOR 26 VICINITY PROPERTIES**

Enclosed for your information is the Partial NPL Site Deletion package for 26 vicinity properties associated with the Maywood site. The package consists of the Partial NPL Site Deletion Data Collection Form, associated maps, longitude and latitude coordinate printouts for the Maywood Interim Storage Site and the potentially deleted properties. Also included are electronic versions of these documents on disk. The 26 vicinity properties included in this package are listed on the following page.

If you have any questions or need further information, please contact me at (423) 576-5724.

Sincerely,

A handwritten signature in black ink that reads "Susan M. Cange".

Susan M. Cange, Site Manager  
Former Sites Restoration Division

Enclosures

**MAYWOOD SITE VICINITY PROPERTIES  
PARTIAL NPL DELETION LIST**

<u>Address</u>	<u>City</u>
59 Avenue C	Lodi, NJ
121 Avenue F	Lodi, NJ
123 Avenue F	Lodi, NJ
3 Hancock Street	Lodi, NJ
58 Trudy Drive	Lodi, NJ
59 Trudy Drive	Lodi, NJ
61 Trudy Drive	Lodi, NJ
64 Trudy Drive	Lodi, NJ
454 Davison Street	Maywood, NJ
459 Davison Street	Maywood, NJ
460 Davison Street	Maywood, NJ
464 Davison Street	Maywood, NJ
468 Davison Street	Maywood, NJ
459 Latham Street	Maywood, NJ
461 Latham Street	Maywood, NJ
467 Latham Street	Maywood, NJ
10 Grove Avenue	Rochelle Park, NJ
22 Grove Avenue	Rochelle Park, NJ
26 Grove Avenue	Rochelle Park, NJ
30 Grove Avenue	Rochelle Park, NJ
34 Grove Avenue	Rochelle Park, NJ
38 Grove Avenue	Rochelle Park, NJ
42 Grove Avenue	Rochelle Park, NJ
86 Park Way	Rochelle Park, NJ
90 Park Way	Rochelle Park, NJ
Ballod (up to the toe of the Route 17 embankment)	Rochelle Park, NJ

# Partial NPL Site Deletion Data Collection Form

(Version 1.0, March 1996)

Site Name: Maywood Chemical Company

CERCLIS ID#: NJD980529762

Name of Deleted Portion: Various Vicinity Properties

Region: 2 State: New Jersey

This form should be completed for all proposed deletions of releases at NPL sites. Include this form as part of the Notice of Intent to Delete (NOID) submitted to EPA Headquarters.

**State, Tribal, and Site Identification Center  
U.S. Environmental Protection Agency**

## Partial NPL Site Deletion Data Collection Form

### General Form Instructions

The Partial NPL Site Deletion Data Collection Form is designed to standardize partial site deletion information for input into the Superfund NPL Assessment Program (SNAP) data base. This data base serves as a repository for general information about NPL sites and is used to respond to queries about NPL sites from a variety of sources including the general public, the media, other government agencies, and members of Congress. The primary source materials for completing this form are the Notice of Intent for Partial Deletion (NOID), site information supporting the decision to delete this portion of the site, and electronic locational data. Requirements for submitting electronic locational data are included in EPA's Locational Data Policy.

As you complete the Partial NPL Site Deletion Data Collection Form, keep the following points in mind.

- Please complete the form in ink, and print legibly.
- Use the most current level of information available (e.g., RI-level information has priority over HRS package-level information).
- Try to use the listed response options when answering a question, and use "unknown" and "other" responses *only* when absolutely necessary. If, however, the available response options for a question are not adequate to accurately describe the site, use the "other" response and provide a brief explanation in the space provided.
- Use the margins to explain responses that do not match listed response options or to provide clarifying information.

Please respond to *all* questions with the answer that you believe best represents the site conditions, given the information available at the time the NOID is prepared. Do *not* skip questions except where specifically directed to do so.

### Information and Data Requirements for Partial Deletions

The State, Tribal, and Site Identification Center (Center) has distributed procedures on how to document partial site deletions. The data requirements are clearly outlined in those procedures, but also reiterated here.

The Regions are required to submit a NOID. This documentation provides useful information related to the site boundary and characteristics if coordinate information is deficient in the electronic version.

Along with the NOID, the partial deletion package should also include the following items:

- A map clearly showing the entire site and that portion to be deleted (including scale);
- Site coordinates (latitude and longitude) for at least three reference points on the map.
- Landmarks, such as roads, water bodies, waste operations, or residential areas (these facilitate reading the map).
- Contacts for both the partial deletion decision and the electronic data.

The above materials are to be provided in both hard and electronic copy. Electronic files in ARC/INFO, MapInfo, GIS+, or those mentioned below are acceptable. If mapping information is not available in these packages, the Center should be contacted to determine how to submit the electronic information.

Electronic files submitted with the partial deletion package should:

- Include all vector/raster layers for the site necessary to recreate a map;
- Include all attribute information associated with the data layers;
- Be delivered in one of the following formats:
  1. ARC/INFO native or export (.E00) format,
  2. ArcView shape files
  3. MapInfo native MapInfo Interchange Format (MIF), MapInfo Boundary Interchange File (MBI), or MapInfo Map Interchange Format (MMI)
  4. GIS+ native
  5. AutoCAD DXF format
  6. ASCII delimited file (include data structure and format for recreation)

If electronic files are to be delivered in a format other than one of those identified in the list above, obtain prior approval from EPA Headquarters. To facilitate the integration of data into these systems it is important that coding of geographic coordinates and associated attributes be standardized.

The site map must be dated. The date is to reflect the delineation of the boundaries of the site as of the date prepared, including the portion to be deleted. Geographic coordinates of points describing a specific object (e.g., operable unit or portion of the site to be delisted) should be included.

## Additional Information

A printout of locational data fields for each data layer in the electronic files should be provided with the electronic files. The printout should include:

1. Projection of data - Map projections allow areas on the surface of the Earth (a spheroid) to be represented on a map (a flat surface) while minimizing distortion. This information is important because it represents the geometric accuracy of the data and it is critical in determining the measurement accuracy.
2. Units of Measure - Map units are the units in which the coordinates of the spatial data represented in your image are stored. They may be in kilometers, inches, feet, etc.
3. Projection Spheroid - Defines the shape of the spheroid for calculating the transformation of coordinates from a particular shape.
4. Projection Zone (i.e. UTM 11 or State Plane Zone 1101 Maryland East) - Identify the map projection or coordinate system used in creating the map. Map projections allow areas on the surface of the Earth (a spheroid) to be represented on a map (a flat surface).
5. Horizontal Datum - A datum is a set of parameters defining a coordinate system, and a set of control points whose geometric relationships are known, either through measurement or calculation.
6. False Northing/False Easting - Any offset on the x and/or y axis applied to coordinates of the data.
7. Source - Describe the source of the geographic data used in creating the file.
8. Source Scale - Map scale is the relationship between the dimensions of a map and the dimensions of the Earth. It is usually expressed as a ratio between a distance on the map and a distance on the Earth, like 1:63,360.
9. Point-Line-Area - Predominant feature type of data (i.e., a point feature may represent a monitor well or a benchmark, a line feature may represent a street, a polygon feature may represent a body of water or an area of contamination).
10. Method of collection - Describe the methodology used in collecting the data (i.e., scanning, manual, digitizing, GPS, etc.).
11. Description and structure of data and any attribute information.

Although not required, the following additional locational data is useful:

1. Accuracy value & unit
2. Xmin, Ymin, Xmax, Ymax of data layer
3. Precision of Data
4. Source Projection
5. Source Units of Measure
6. Source Projection Spheroid
7. Source Horizontal Datum

For questions on completing this form or completing a NOID, contact Ms. Terry Keidan at EPA Headquarters via lanmail or phone (703) 603-8852, fax (703) 603-9104. For questions on locational and site/deletion delineation information, contact Dr. Larry Zaragoza at (703) 603-8867.

## 1. Basic Identifying Information

- 1.1 Site Name (as entered in CERCLIS): Maywood Chemical Company
- 1.2 CERCLIS ID Number: N J D 9 8 0 5 2 9 7 6 2
- 1.3 NPL Site Location: City: Maywood State: New Jersey  
County: Bergen Zip Code: 07607
- 1.4 Name Given to Deleted Portion of the Site: Various vicinity properties
- 1.5 Is this the first, second, third, etc. partial deletion at the site? (Enter the deletion number): 1
- 1.6 Name of Person(s) Completing Form: Andrea K. George  
Affiliation (agency/company): Bechtel National, Inc.  
Phone Number: (423) 576-3999
- 1.7 Name of Person(s) Completing Electronic Locational Data: Bryan M. Lynn  
Affiliation (agency/company): Bechtel National, Inc.  
Phone Number: (423) 576- 3508

- 1.8 **BRIEF PARTIAL DELETION NARRATIVE.** Provide a brief narrative describing the location and extent of the release to be deleted. Include a discussion of the locational data and method(s) used to delineate the deleted release. Attach additional pages if necessary.

This release includes the following properties in Lodi, NJ: 59 Avenue C, 121 Avenue F, 123 Avenue F, 3 Hancock Street, 58 Trudy Drive, 59 Trudy Drive, 61 Trudy Drive, and 64 Trudy Drive.

This release includes the following properties in Maywood, NJ: 454 Davison Street, 459 Davison Street, 460 Davison Street, 464 Davison Street, 468 Davison Street, 459 Latham Street, 461 Latham Street, and 467 Latham Street.

This release includes the following properties in Rochelle Park, NJ: 10 Grove Avenue, 22 Grove Avenue, 26 Grove Avenue, 30 Grove Avenue, 34 Grove Avenue, 38 Grove Avenue, 42 Grove Avenue, 86 Park Way, 90 Park Way, and the Ballod Property, up to the toe of the Route 17 embankment.

Locational data (longitude and latitude) were obtained by converting state plane coordinates which were determined by civil survey. The deleted releases are delineated by property boundaries. Where two or more properties shared a common boundary, only the exterior boundaries were delineated.



1.9 **PARTY REQUESTING DELETION.** Which party or parties requested the partial deletion (check all that apply):

- Developer
- Property Owner/Operator
- City/Municipality
- State
- Citizen group
- Other Interest group
- Individual
- EPA
- Other Federal program (specify) Department of Energy FUSRAP
- Other (specify) \_\_\_\_\_
- Unknown

1.10 **REASON FOR PARTIAL DELETION.** Which reason or reasons best justify the partial deletion (check all that apply):

- Contamination not found
- Cleaned up
- Deferred to RCRA
- Deferred to other Agency (specify) \_\_\_\_\_
- Incorrectly included in site boundaries
- Other (specify) \_\_\_\_\_

## 2. Partial Deletion Package Contents

2.1 Which of the following items has been provided in the partial deletion package?

**Electronic    Hard Copy**

- Notice of Intent to Delete (NOID)
- Map of the entire site and deleted portion (scale included)

2.2 Which locational data fields have been provided in both electronic and printout form? (Check only the fields that apply)

**Electronic    Printout**

- Projection of data
- Units of measure
- Projection spheroid
- Projection zone (i.e., UTM 11 or State Plane Zone 1101 Maryland East)
- Horizontal Datum
- XShift/YShift
- Source
- Source Scale
- Point-Line-Area
- Method of collection
- Description and structure of data and any attribute information
- Accuracy value and unit
- Xmin, Ymin, Xmax, Ymax of data layer
- Precision of data
- Source projection
- Source units of measure
- Source projection spheroid

Source horizontal datum

2.3 In what format(s) were the partial deletion electronic files submitted? (Check all that apply.)

- ARC/INFO native or export (.E00)
- ArcView shape files
- MapInfo native Map Info Interchange Format (MIF)
- MapInfo Boundary Interchange (MBI)
- MapInfo Map Interchange (MMI)
- GIS+ native
- AutoCAD DXF
- ASCII delimited file (include data structure and format for re-creation)

2.4 **NPL SITE COORDINATES.** Coordinates of the entire site should be provided in the form of polygons, starting with the northern-most coordinate and moving clockwise (in degrees, minutes, seconds, and thousandths of seconds):

Please see attached printouts.

2.5 **DELETED PORTION COORDINATES.** Coordinates of the deleted portion of the site should be provided in the form of polygons, starting with the northern-most coordinate and moving clockwise (in degrees, minutes, seconds, and thousandths of seconds):

Please see attached printouts.

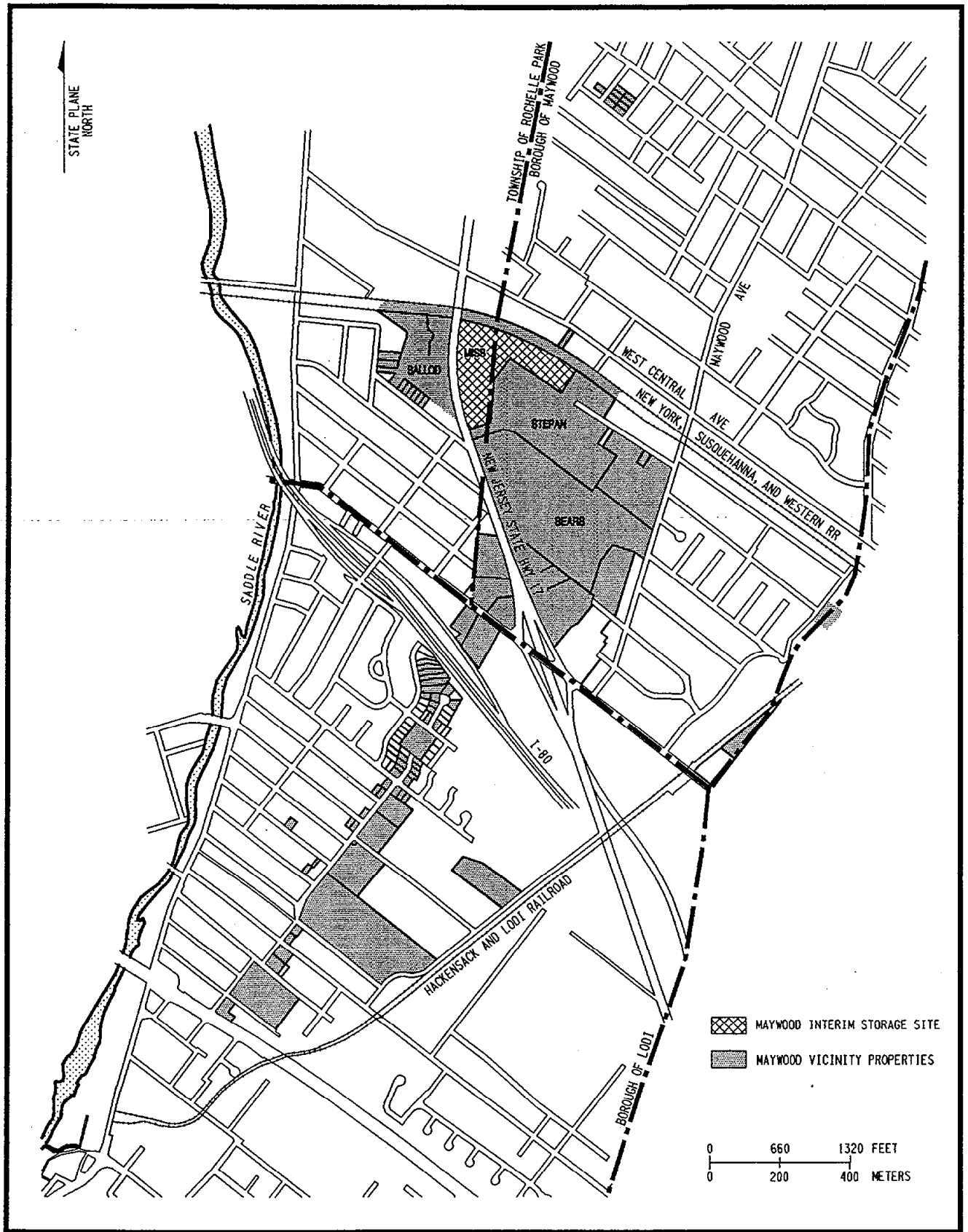
2.6 What method was used to identify the NPL site and deleted portion coordinates? Locational data  
(longitude and latitude) were obtained by converting state plane coordinates which were determined  
by civil survey. The deleted releases were delineated by property boundaries. Where two or more  
properties shared a common boundary, only the exterior boundaries were delineated.

### 3. Dates

3.1 Date this Form Was Completed: 09/06/96 (mm/dd/yy)

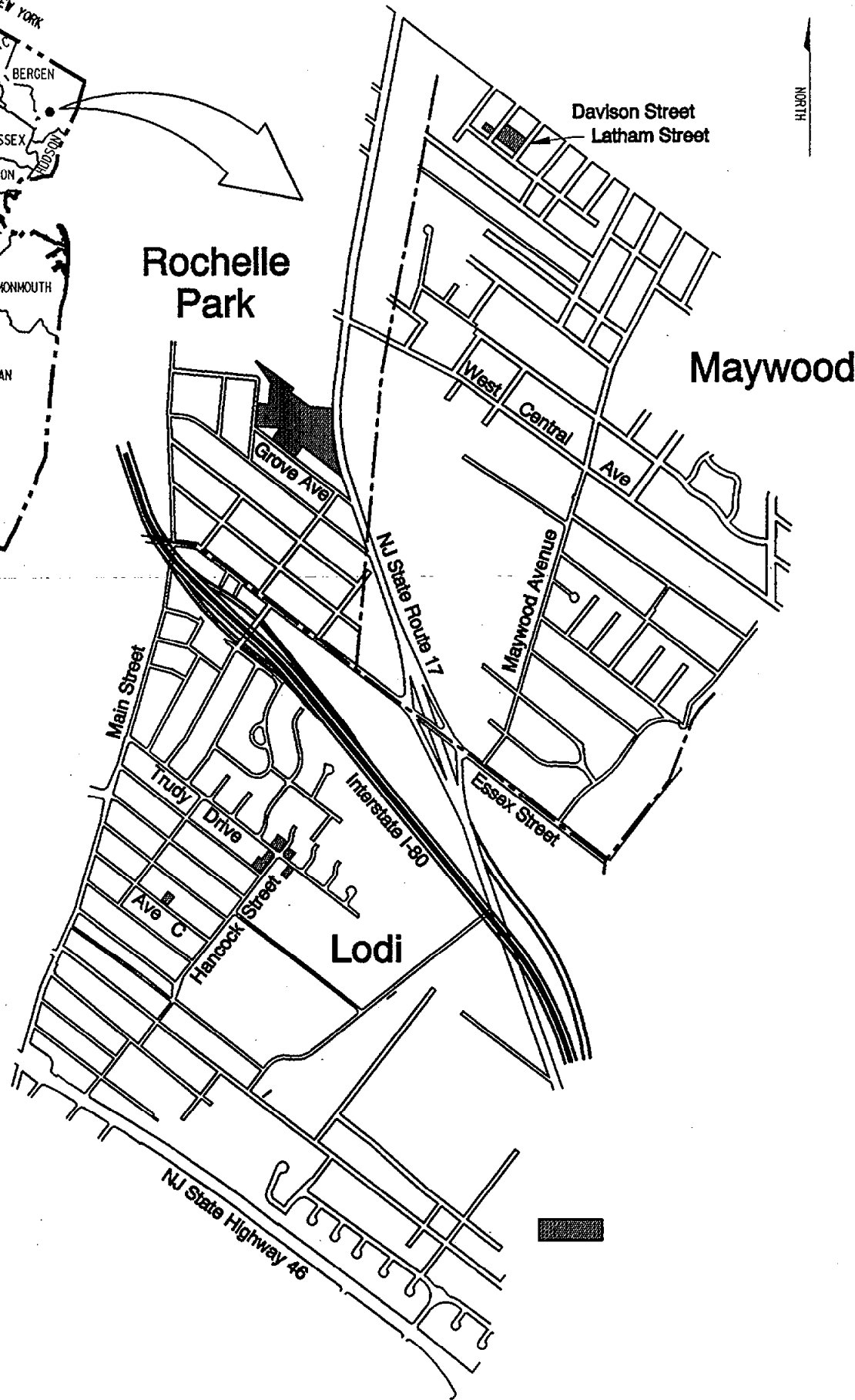
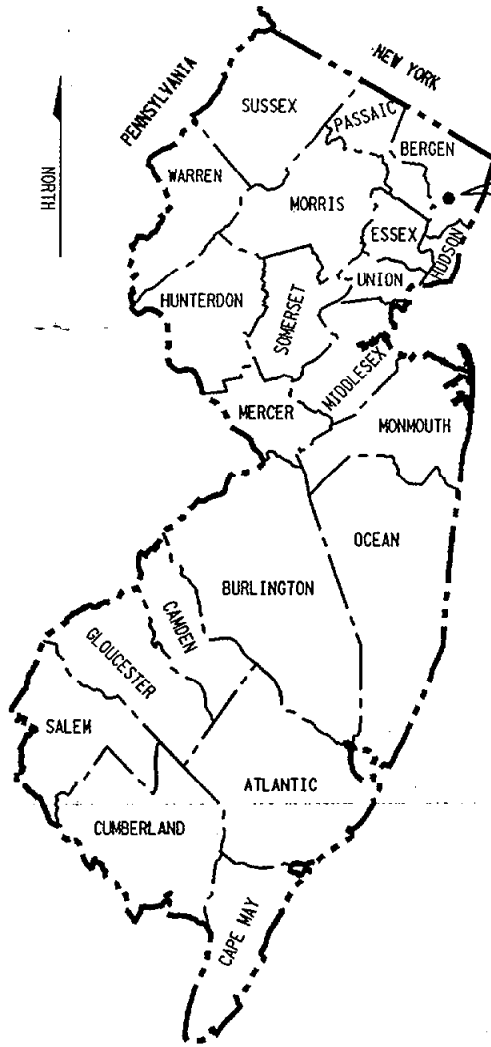
3.2 Date Partial Deletion Proposed in FR: \_\_\_\_\_ (mm/dd/yy)

3.3 Date Partial Deletion Finalized in FR: \_\_\_\_\_ (mm/dd/yy)

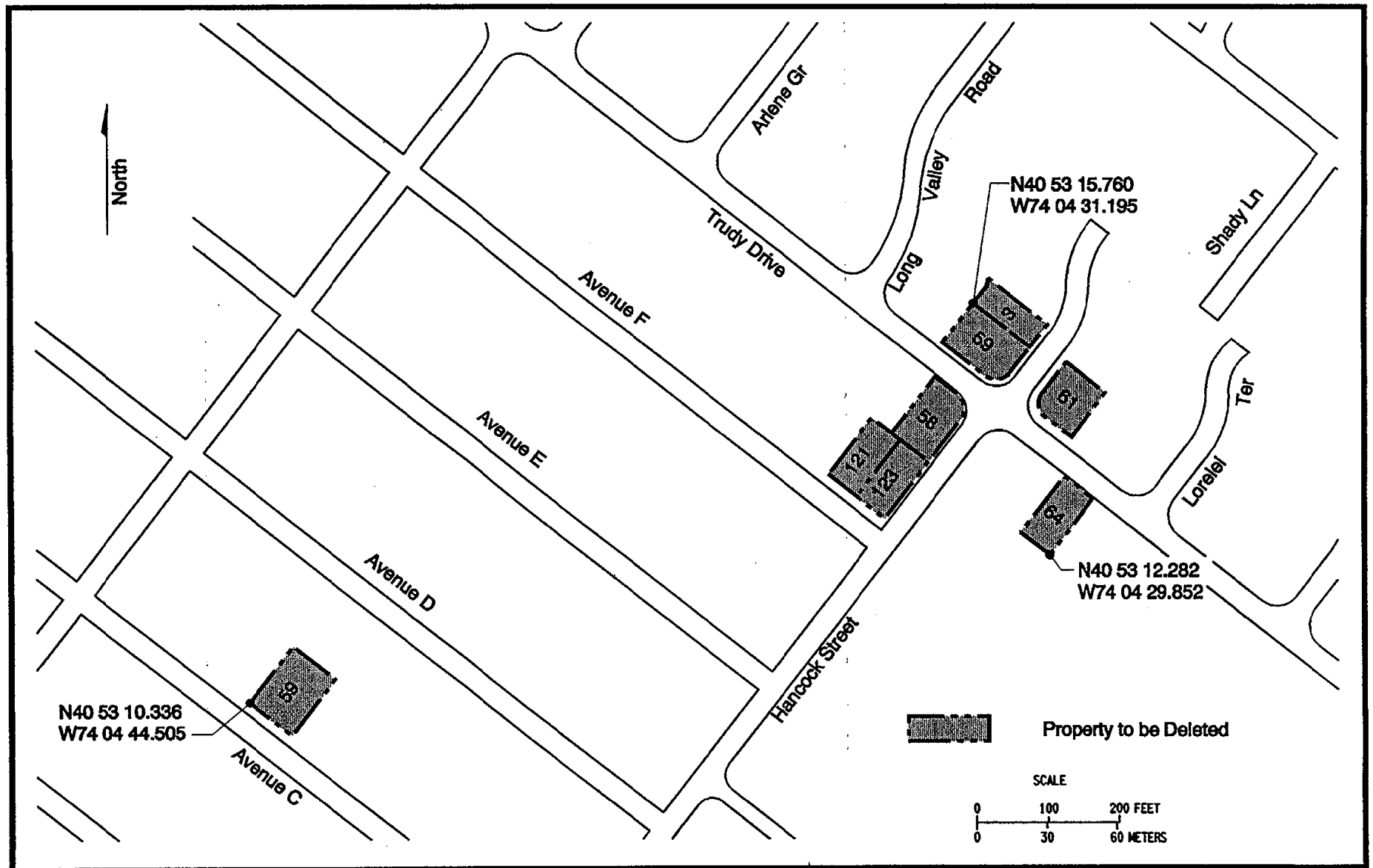


138F225.DGN  
9/5/96

### Maywood Site Maywood, New Jersey

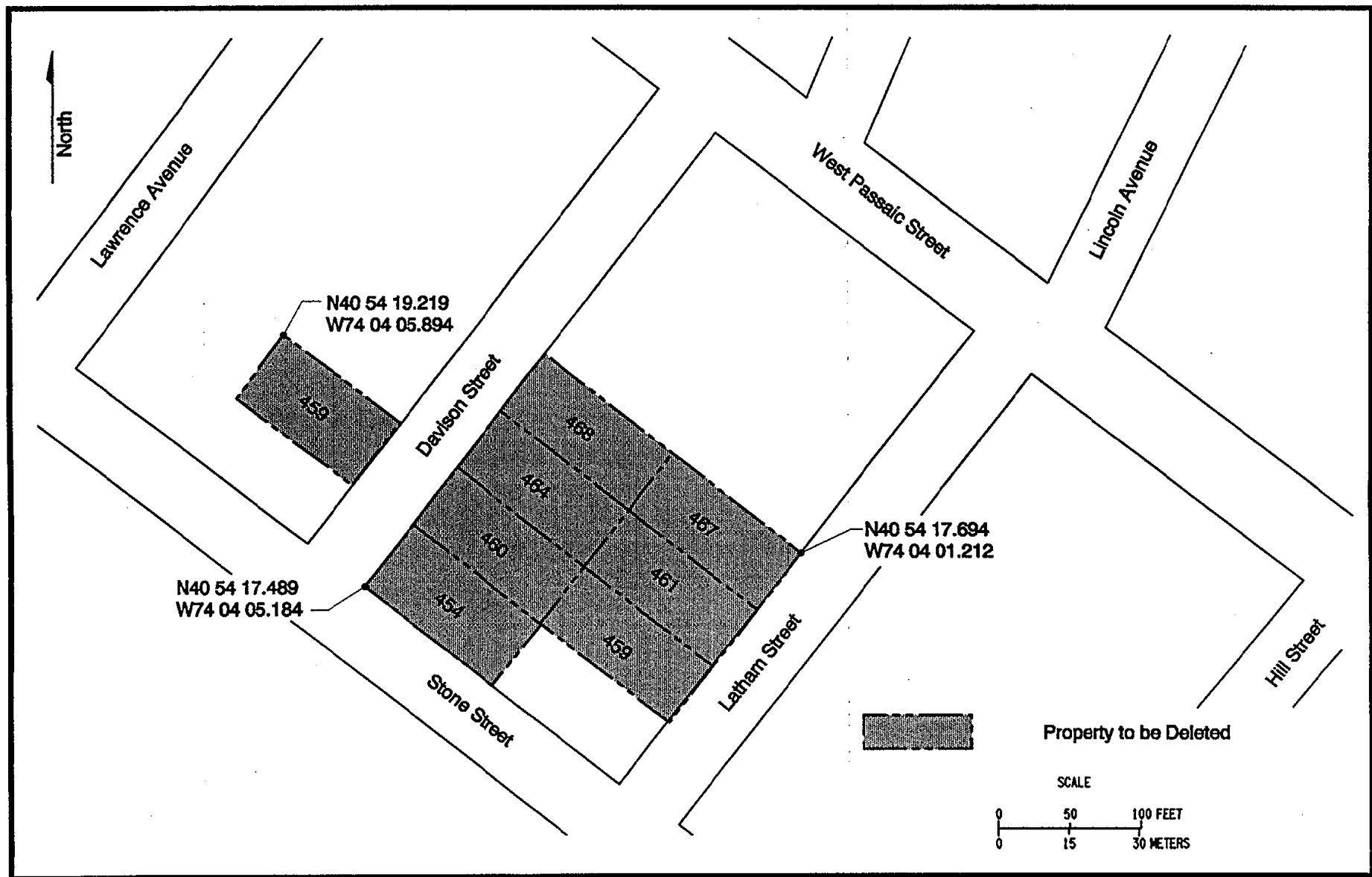


# Remediated Properties in the Maywood Vicinity



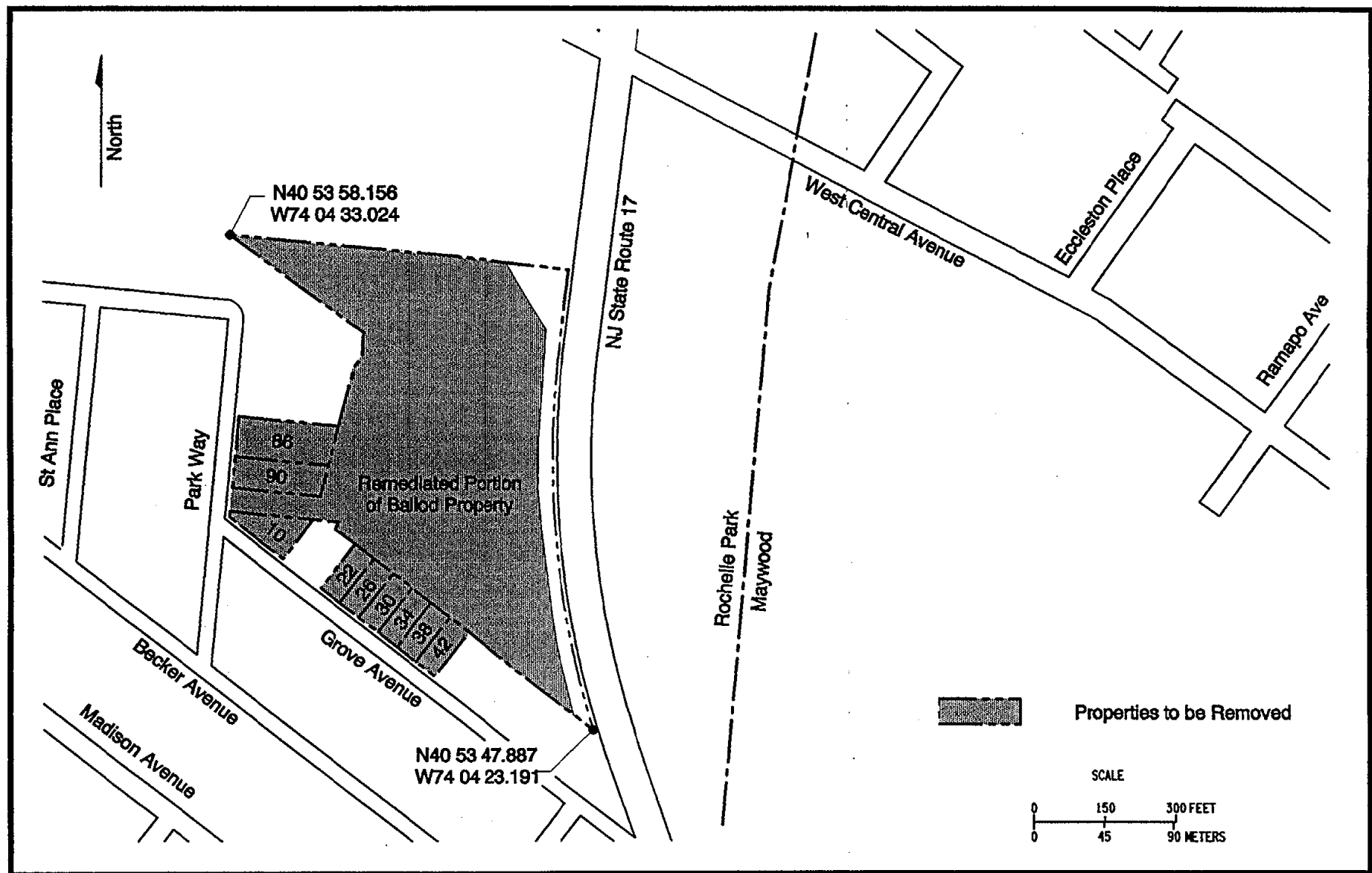
158222.DGN  
9/5/96

**Figure 1**  
**Properties to be Deleted in Lodi, NJ**



138F224.DGN  
9/5/96

**Figure 2**  
**Properties to be Deleted in Maywood, NJ**



138F223.DGN  
9/5/95

Figure 3  
Properties to be Removed in Rochelle Park, NJ

NPL SITE COORDINATES

VCNPROP.OUT

;Software: CORPSCON V4.12  
 ;Agency: U.S. DEPARTMENT OF ENERGY  
 ;Project: FUSRAP  
 ;Created: 9/5/96 3:03 PM  
 ;Coordinates on NAD 27 Geographic Coordinates

	NORTH LATITUDE	WEST LONGITUDE
108-112 AVE E		
NW CNR 108	,44 40 04.05579,079	28 38.37879
SW CNR 108	,42 51 39.45175,054	13 49.34660
SE CNR 112	,44 40 04.15115,079	28 40.32517
NE CNR 112	,44 40 04.79747,079	28 39.28568
113 AVE E		
NW CNR 113	,44 40 05.39619,079	28 37.27092
SW CNR 113	,44 40 04.74988,079	28 38.31042
SE CNR 113	,44 40 05.12561,079	28 38.76497
NE CNR 113	,44 40 05.77193,079	28 37.72547
11 REDSTONE		
NW CNR 11	,44 40 12.47771,079	28 26.25988
SW CNR @ BRANCA	,44 40 12.00871,079	28 27.30999
SW CNR @ RDSTN	,44 40 12.04683,079	28 27.57605
NE CNR 11	,44 40 12.97508,079	28 26.87394
14-26 LONG VALLEY, 2-6, 11 BRANCAS		
NW CNR 14 LV	,44 40 10.75693,079	28 18.61636
SW CNR 26 LVY	,44 40 10.96967,079	28 23.39386
SE CNR 26 INT 6 BR	,44 40 11.90832,079	28 23.84659
SW CNR 2 BRANCA	,44 40 11.47250,079	28 25.04612
INT 2 @ 17 RDST	,44 40 11.78497,079	28 25.36258
SW CNR 17 RDSTON	,44 40 11.12563,079	28 26.47717
SE CNR 17 RDSTON	,44 40 11.55762,079	28 27.00279
SE CNR 6 BRANCA	,44 31 54.24421,082	02 53.72655
SE CNR 24 LVY	,44 40 12.88832,079	28 23.08787
SE CNR 11 BRANCA	,44 40 13.66192,079	28 23.47436
NE CNR 11 BRANCA	,44 40 14.28821,079	28 22.67388
INT 11@ 22	,44 40 13.71134,079	28 21.60492
INT 20 @ 22	,44 40 13.86956,079	28 21.13234
NE CNR 14 LVY	,44 40 12.86071,079	28 18.83625
N PT 14 LVY	,44 40 11.73329,079	28 18.41080
5 & 7 HANCOCK		
SE CNR 5 HAN	,44 40 09.20906,079	28 32.56982
NE CNR 5 HAN	,44 40 09.39560,079	28 31.89482



NPL SITE COORDINATES

VCNPROP.OUT

NE CNR 7 HAN	,44 40	09.53604,079	28	31.14268
NW CNR 7 HAN	,44 40	08.76599,079	28	30.20576
SW CNR 7 HAN	,44 40	08.59773,079	28	30.91548
SW CNR 5 HAN	,44 40	08.42952,079	28	31.62381

7 BRANCA

NW CNR 7 BRANCA	,44 40	13.78876,079	28	23.97746
SW CNR 7 BRANCA	,44 40	13.43676,079	28	24.59588
SE CNR 7 BRANCA	,44 40	14.16921,079	28	25.48816
NE CNR 7 BRANCA	,44 40	14.80149,079	28	24.07935

170 GREGG ST (BERGEN CABLE)

NW CNR BERGEN	,44 40	14.09677,079	28	44.46936
SW CNR BERGEN	,44 40	12.98351,079	28	46.27546
SE CNR BERGEN	,44 40	17.35863,079	28	51.61842
NE CNR BERGEN	,44 40	19.28547,079	28	49.72069
NORTH POINT	,44 40	15.80172,079	28	45.47975

COLUMBIA & GARIBALDI

NW 106 COLUM	,44 39	58.43215,079	28	52.02947
SW 99 GARI	,44 39	57.16181,079	28	54.04651
SE 99 GARI	,44 39	57.65011,079	28	54.64046
NE 99 GARI	,44 39	58.29640,079	28	53.60243
SE 106 COLUM	,44 39	58.37156,079	28	53.69306
NE 106 COLUM	,44 39	58.98541,079	28	52.72151

ESSEX & HWY 17

NW CRNR	,44 40	17.15911,079	28	02.63735
SW CNR	,44 40	16.37165,079	28	11.22736
PT 1 SOUTH	,44 40	19.11631,079	28	14.74096
SOUTH CNR	,44 40	19.79238,079	28	15.33245
SE CNR	,44 40	20.21743,079	28	14.85428
PT 1 @ HWY 17	,44 40	20.19083,079	28	11.04400
PT 2 @ HWY 17	,44 40	19.96056,079	28	08.78189
PT 3 @ HWY 17	,44 40	19.43672,079	28	05.75519
NE CNR	,44 40	19.01720,079	28	03.06369

FIREMEN'S PARK & FIRE STATION

NW FIRE PK	,44 39	56.83336,079	28	54.57407
SW FIRE STATION	,44 39	55.37042,079	28	56.94175
SE FIRE STATION	,44 39	56.46534,079	28	58.36639
NE FIRE PK	,44 39	57.96003,079	28	55.94877

KENNEDY PARK

NW KENNEDY	,44 39	54.60069,079	28	56.69801
SW KENNEDY	,44 39	52.06834,079	29	00.76721

NPL SITE COORDINATES

VCNPROP.OUT

SE KENNEDY ,44 39 56.03541,079 29 05.48246  
 NE KENNEDY ,44 39 58.37655,079 29 01.73220

LODI PARK & HANCOCKS

NW CNR LODI PK ,44 40 10.51631,079 28 26.64255  
 SW CNR LODI PK ,44 40 08.84221,079 28 29.33760  
 INT @ 10 HAN ,44 40 10.19403,079 28 30.99380  
 NW CNR 8 HAN ,44 40 09.96453,079 28 31.51719  
 SW CNR 8 HAN ,44 40 09.85700,079 28 32.19181  
 SW CNR 6 HAN ,44 40 09.67226,079 28 32.82406  
 SW CNR 4 HAN ,44 40 09.36305,079 28 33.36436  
 SE CNR 4 HAN ,44 40 09.87915,079 28 34.00211  
 4HAN E PT 2 ,44 40 10.02712,079 28 33.77223  
 EAST CNR 4 HAN ,44 40 10.25248,079 28 34.04689  
 NE CNR 6 HAN ,44 40 10.56091,079 28 33.05822  
 NE CNR 8 HAN ,44 40 10.70576,079 28 32.43512  
 NE CNR 10 HAN ,44 40 10.93596,079 28 31.89519  
 INT LODI & 10 HAN ,44 40 10.70158,079 28 31.60041  
 NE CNR LODI PK ,44 40 12.38577,079 28 28.90065

MISS

NW CRNR MISS ,44 40 16.77088,079 27 34.63188  
 SW CRNR MISS ,44 40 16.99526,079 27 48.97611  
 SE INT @ STEPAN ,44 40 18.98324,079 27 48.19677  
 2ND INT @ STEPAN ,44 40 19.53065,079 27 42.71121  
 3RD INT @ STEPAN ,44 40 21.09094,079 27 40.13216  
 EASTERN CRNR ,44 40 25.67929,079 27 44.88825  
 NE CRNR MISS ,44 40 27.14841,079 27 42.13002

NJ VEHICLE INSP CENTER

NW VEHICLE ,44 40 01.44723,079 28 45.65207  
 PT 1 @ HANCOCK ,44 39 59.43537,079 28 48.85846  
 SW CNR VEHICLE ,44 39 58.64602,079 28 51.40937  
 SE @ COLUMBIA ,44 40 05.88618,079 29 00.44341  
 NE VEHICLE ,44 40 11.14481,079 28 57.74867  
 NW CNR 60 ,44 40 08.58327,079 28 34.75811  
 MID RADIUS ,44 40 08.43964,079 28 34.65212  
 END RADIUS ,44 40 08.23631,079 28 34.79023  
 SW CNR 60 ,44 40 07.74909,079 28 35.57036  
 SW CNR 62 ,44 40 08.21914,079 28 36.12958  
 SW CNR 64 ,44 40 08.58480,079 28 36.58883  
 SE CNR 64 ,44 40 08.96996,079 28 37.05385  
 NE CNR 64 ,44 40 09.61598,079 28 36.02122

80 HANCOCK (AIRCO MEDICAL)

NW CNR AIRCO ,44 40 06.36201,079 28 37.78130

NPL SITE COORDINATES

VCNPROP.OUT

SW AIRCO ,44 40 04.49788,079 28 40.76486  
MID RADIUS ,44 40 04.46189,079 28 40.91546  
SW CNR AIRCO ,44 40 04.51515,079 28 41.05686  
SE CNR AIRCO ,44 40 06.30639,079 28 43.29470  
NW CNR AIRCO ,44 40 08.28473,079 28 40.17948

100 HANCOCK (APPLETON ELECTRIC)

NW CNR APPLETON ,44 40 07.74909,079 28 35.57036  
SW CNR APPLETON ,44 40 06.36201,079 28 37.78130  
SE CNR APPLETON ,44 40 08.28473,079 28 40.17948  
NE CNR APPLETON ,44 40 09.71252,079 28 37.94008

80 INDUSTRIAL RD (FLINT INK)

NE CNR FLINT ,44 40 06.88655,079 28 44.75138  
NW INT PT ,44 40 04.43846,079 28 41.70220  
MID NW RADIUS ,44 40 04.15395,079 28 41.42540  
NW INT @ HANC ,44 40 03.80923,079 28 41.87140  
SW CNR FLINT ,44 40 01.44764,079 28 45.64242  
SE CNR FLINT ,44 40 04.15783,079 28 49.03020

I-80 RIGHT OF WAY

NW CNR ,44 40 15.85321,079 28 11.81265  
WEST CNR ,44 40 14.22315,079 28 14.40223  
INSIDE CNR ,44 40 15.09589,079 28 15.48045  
SW CNR ,44 40 14.59305,079 28 15.93003  
SE CNR BANK ,44 40 16.62812,079 28 20.11134  
NE CNR BANK ,44 40 18.74395,079 28 15.37432

MAYWOOD AVE

NW CNR ,44 40 30.28425,079 27 50.18561  
WEST CNR ,44 40 29.20004,079 27 52.24501  
INT @ STEPAN ,44 40 30.46899,079 27 53.52896  
SW CNR ,44 40 28.32457,079 27 57.31204  
SE CNR ,44 40 33.40672,079 28 03.46432  
NE CNR ,44 40 35.51747,079 27 55.56841

NE-BALLOD

CNR @ 17 ,44 40 15.94991,079 27 34.43122  
W CNR @ DELETE ,44 40 14.64981,079 27 34.11904  
S CNR @ DELETE ,44 40 15.39566,079 27 36.10124

SIDNEY ST

NW CNR SIDNEY ,44 39 51.47846,079 29 00.93962  
SW PT @ MONEY ,44 39 50.52524,079 29 02.46265  
MID PT SW RADIUS ,44 39 50.46669,079 29 02.67916  
E PT SW RADIUS ,44 39 50.56237,079 29 02.98456

NPL SITE COORDINATES

VCNPROP.OUT

SE CNR SIDNEY	,44 39	51.76752,079	29	04.13749
E SE CNR	,44 39	52.14822,079	29	03.54234
SE CNR	,44 39	51.58420,079	29	02.87154
NE CNR SIDNEY	,44 39	52.23045,079	29	01.83494
90 AVE C				
NW CNR 90	,44 40	00.68259,079	28	43.42192
SW CNR 90	,44 40	00.03632,079	28	44.45999
SE CNR 90	,44 40	00.29014,079	28	44.76192
NE CNR 90	,44 40	00.92640,079	28	43.72716
79 AVE B				
NW CNR 79	,44 39	59.79246,079	28	44.15613
SW CNR 79	,44 39	59.13628,079	28	45.19476
SE CNR 79	,44 39	59.51201,079	28	45.64931
NE CNR 79	,44 40	00.15811,079	28	44.61537
136 W CENTRAL				
NE CNR 136	,44 40	27.14003,079	27	37.17812
NW CNR 136	,44 40	26.75352,079	27	36.74350
SW CNR 136	,44 40	25.53983,079	27	38.83098
SE CNR 136	,44 40	25.94788,079	27	39.22310
STEPAN & SEARS				
SW CNR MISS	,44 40	16.93430,079	27	49.01674
PT1 SE @HWY17	,44 40	20.25943,079	28	05.68075
SOU CNR	,44 40	23.61004,079	28	17.98853
PT 1 SE	,44 40	25.29846,079	28	15.42032
PT2 SE	,44 40	25.93789,079	28	15.00970
PT3 SE	,44 40	27.37580,079	28	12.76110
PT4 SE	,44 40	27.42282,079	28	11.88213
SE CNR SEARS	,44 40	29.39954,079	28	14.40796
E CNR SEARS	,44 40	31.55265,079	28	06.21552
SE CNR @MAYWD	,44 40	32.35129,079	28	07.17835
NE CNR @ MAYWD	,44 40	35.43689,079	27	55.60602
PT1 NE	,44 40	30.20367,079	27	50.22323
PT2 NE	,44 40	29.12930,079	27	52.28344
PT3 NE	,44 40	28.73185,079	27	51.87418
PT4 NE	,44 40	29.88284,079	27	49.87012
PT5 NE	,44 40	26.71323,079	27	46.59414
PT6 NE	,44 40	27.02209,079	27	46.06062
PT7 SE @ RD	,44 40	29.37807,079	27	48.49439
NE CNR @ RR	,44 40	31.19194,079	27	45.05475
INT1 @ 136 W CEN	,44 40	25.94788,079	27	39.22310
INT2 @ 136 W CEN	,44 40	25.44178,079	27	38.81457
NW CNR STEP	,44 40	17.06128,079	27	33.36485

NPL SITE COORDINATES

	VCNPROP.OUT			
NW CNR @ MISS	,44	40	16.71976,079	27 34.67332
NE CNR MISS	,44	40	27.08745,079	27 42.17065
E INT @ MISS	,44	40	25.61833,079	27 44.92887
UPPER INT @ MISS	,44	40	21.02998,079	27 40.17279
INT @ MISS & BOU	,44	40	19.46969,079	27 42.75183
SE CNR MISS	,44	40	18.93212,079	27 48.23820

DELETED PORTION COORDINATES

MVPCOORD.OUT

;Software: CORPSCON V4.12  
 ;Agency: U.S. DEPARTMENT OF ENERGY  
 ;Project: FUSRAP  
 ;Created: 8/27/96 11:28 AM  
 ;Coordinates on NAD 27 Geographic Coordinates

	NORTH LATITUDE	WEST LONGITUDE
10 GROVE & PKWY		
NE CRNR 10 GROVE	,40 53 51.91290,074	04 32.29746
NW CRNR 10 GROVE	,40 53 52.09271,074	04 34.58663
SW CRNR 10 GROVE	,40 53 51.98577,074	04 34.60126
22-42 GROVE		
NW CRNR 22	,40 53 51.40937,074	04 31.16255
SW CRNR 22	,40 53 50.49745,074	04 32.10796
SE CRNR 42	,40 53 48.66476,074	04 29.03766
NE CRNR 42	,40 53 49.56930,074	04 28.09999
3 HANCOCK		
NWCRNR	,40 53 15.73881,074	04 32.40738
POINT W	,40 53 15.63426,074	04 32.44438
SWCRNR	,40 53 15.40271,074	04 32.68691
SECRNR	,40 53 14.79008,074	04 31.66550
NECRNR	,40 53 15.10017,074	04 31.34259
459 DAVISON		
NW CRNR	,40 54 18.86242,074	04 07.38640
SW CRNR	,40 54 18.43149,074	04 07.82277
SE CRNR	,40 54 17.82553,074	04 06.78326
NE CRNR	,40 54 18.25645,074	04 06.34688
58 TRUDY & AVE F		
NW CRNR 58	,40 53 14.39354,074	04 33.39934
SW CRNR 58	,40 53 13.61665,074	04 34.20383
NW CRNR 121	,40 53 13.83083,074	04 34.56165
SW CRNR 121	,40 53 13.05384,074	04 35.36588
SE CRNR 123	,40 53 12.44191,074	04 34.34368
E RADIUS 58	,40 53 13.81090,074	04 32.92852
MID CURVE	,40 53 13.96406,074	04 32.86935
NE CRNR 58	,40 53 14.12370,074	04 32.95894
59 AVE C		
NW CRNR 59C	,40 53 10.75605,074	04 45.19226
SW CRNR 59C	,40 53 09.97894,074	04 45.99631
SE CRNR 59C	,40 53 09.52001,074	04 45.22962

DELETED PORTION COORDINATES

	MVPCOORD.OUT			
NE CRNR 59C	,40	53	10.29830,074	04 44.42426
59 TRUDY				
NW CRNR	,40	53	15.40271,074	04 32.68691
SW CRNR	,40	53	14.85957,074	04 33.25237
SE CRNR	,40	53	14.39954,074	04 32.48726
MID SE RADIUS	,40	53	14.34801,074	04 32.24738
N END SE RADIUS	,40	53	14.44027,074	04 32.02965
NE CRNR	,40	53	14.79008,074	04 31.66550
61 TRUDY				
NW CRNR	,40	53	14.57950,074	04 31.00845
NW END RADIUS	,40	53	14.18929,074	04 31.41345
MID CURVE	,40	53	14.01351,074	04 31.50993
S END RADIUS	,40	53	13.83568,074	04 31.42024
SE CRNR	,40	53	13.54372,074	04 30.92471
NE CNR	,40	53	14.15552,074	04 30.29875
64 TRUDY				
NW CRNR 64	,40	53	13.00177,074	04 31.06507
SW CRNR 64	,40	53	12.23671,074	04 31.86295
SE CRNR 64	,40	53	11.92487,074	04 31.34377
NE CRNR 64	,40	53	12.69202,074	04 30.54991
86-90 PARKWAY				
NW CRNR 86 PKWY	,40	53	54.05837,074	04 34.31875
SW CRNR 90 PKWY	,40	53	52.58415,074	04 34.51976
SE CRNR 90 PKWY	,40	53	52.39086,074	04 32.10647
NE CRNR 86 PKWY	,40	53	53.84371,074	04 31.59025
BALLOD PROPERTY				
NW CRNR	,40	53	57.79899,074	04 34.51584
PT SE OF NW CRNR	,40	53	55.77645,074	04 30.89577
PT 2	,40	53	55.28354,074	04 30.94444
PT 3	,40	53	55.01484,074	04 31.18891
INT @ 86 PKWY	,40	53	53.84371,074	04 31.59025
SE CRNR 90 PKWY	,40	53	52.39086,074	04 32.10647
SW CRNR 90 PKWY	,40	53	52.58040,074	04 34.52018
NE CRNR 10 GROVE	,40	53	52.03919,074	04 34.59401
NE CRNR 10 GROVE	,40	53	51.91290,074	04 32.29746
BRK PT E OF 10 GROV	,40	53	51.86339,074	04 31.62129
DUE SOUTH OF BRK PT	,40	53	51.70738,074	04 31.68206
INT 22 GROVE	,40	53	51.40937,074	04 31.16255
INT 42 GROVE	,40	53	49.56930,074	04 28.09999
SE CRNR REMEDIATION	,40	53	47.83434,074	04 25.20816
PT 1 EAST SIDE	,40	53	49.24279,074	04 25.64991

DELETED PORTION COORDINATES

MVPCOORD.OUT  
PT 2 EAST SIDE ,40 53 52.05350,074 04 26.07732  
PT 3 EAST SIDE ,40 53 53.00694,074 04 26.11646  
PT 4 EAST SIDE ,40 53 54.65487,074 04 25.99328  
UP EAST CNR ,40 53 55.80504,074 04 25.87910  
NE CRNR ,40 53 57.18241,074 04 26.96338

DAVISON/STONE STREETS

NW 468 DAV ,40 54 18.71502,074 04 05.01035  
SW 454.DAV ,40 54 17.13241,074 04 06.67672  
NE 454 DAV/SE 460 D,40 54 16.86181,074 04 05.06613  
SE 459 LATH ,40 54 16.17313,074 04 03.91342  
NE 467 LATH ,40 54 17.33757,074 04 02.70493